

ARENA CHURCH:

**THIS
IS US**

OUR CHURCH STORY:

Founded in 1929, Arena Church Ilkeston has been pioneered and guided by many faithful leaders. Our Lead Pastor, Kristian Thorpe, arrived along with his family in February 2000. We operate with a clear vision to “Go and grow and to love and serve our world”, engaging with people across the community through our campuses with life-giving messages and passionate praise in multi-generational and multicultural services, helping new people to find Jesus every week.

We plant and repurpose new churches both locally and further afield. Hundreds of people serve on our Dream Teams, impacting and serving thousands of people every month throughout local communities. We have outstanding connections with local charities, business owners, Government leaders, MPs and the Police. Everybody is a somebody at Arena Church, and all are welcome to connect through our Small Groups, where strong relationships are formed and discipleship is nurtured. We are 1 church in 6 locations.

We are an Assemblies of God church and also are in alliance with the Evangelical Alliance.

OUR PURPOSE:

To ***GO*** and ***GROW*** and
to ***LOVE*** and ***SERVE***
our ***WORLD***.

OUR VISION:

For people to
KNOW GOD,
FIND FREEDOM,
DISCOVER THEIR PURPOSE
and ***MAKE A DIFFERENCE!***

"EVERYBODY IS SOMEBODY AT ARENA"

Something you will hear repeatedly across Arena Church is
"Everybody is somebody at Arena."

We have young, old, rich, poor, educated, uneducated, those from prison and those who have never been in trouble, black and white, singles and families, multi generational, multi faceted. A mosaic of brokenness!

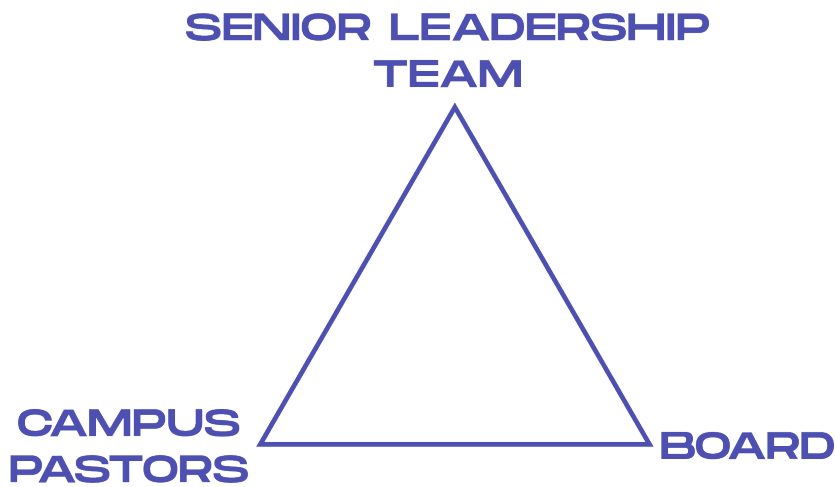
We are conservative in doctrine, radical in approach!

Expressed through:-

- Behaviours Document
- Thieves and Occupants
- Growth Track / Digging Deep / Prayer / Bible Study / Leadership Track - all important parts as we GROW!
- What we believe: see arenachurch.co.uk/what-we-believe

CHURCH LEADERSHIP:

Arena Church has a Triangular Leadership Foundation made up principally of 3 groups:-



DIRECTED BY A SENIOR LEADERSHIP TEAM

Directed by a Senior Leadership Team – This team led by the Lead Pastor brings Directional Spiritual, Vision and Strategy to the whole of Arena Church.



Kristian Thorpe
Lead Pastor



Phil Pye
Teaching Pastor



Julie Turner
Executive Pastor

GUIDED BY CAMPUS PASTORS

The Campus Pastors and their localised Team bring a “grass roots” Pastoral and Outreach lead to each location. This team “care for and shepherd” the individual campuses and “reach out and serve” their geographical location.



**David & Jeanette
Blyth**

*Belper Campus
Since Sept 2019*



**Lisa
Harrison**

*Ilkeston Hub Campus
Since Sept 2019*



**Tim & Helen
Bailie**

*Ilkeston Campus
Since Feb 2022*



**Josh & Helen
Turner**

*Mansfield Campus
Since Jan 2017*



**Jono & Annie
Kirk**

*Nottingham Campus
Since Sept 2019*



**Patrick & Lucille
Nana-Gassa Gongga**

*Toulouse Campus
Since Sept 2019*

KEY PEOPLE/MEMBERS

We also have some key people who serve the church in a broad range of ministries across all the locations:



Louise Bussell
Arena Kids Pastor



Jono & Annie Kirk
*Arena Students
Pastors*



Annie Kirk
Worship Pastor



Eleanor Thorpe
*Creative Director &
Buildings Manager*



Christine Austin
*Seniors Leader &
Business Manager*



Lisa Harrison
Community Pastor

We also have a brilliant staff team who lead in administration, safeguarding, HR, H & S, Media, Buildings and Maintenance, Social Media, I.T and Finance across all the locations for church and community. They really are unsung heroes who are the cogs that make things work!

PROTECTED BY A BOARD OF TRUSTEES

The board of trustees bring their considerable marketplace wisdom, skills and expertise and appropriate legal and financial governance to Arena Church.



Phil Pye

*Chair of the Board
(Staff)*



Kristian Thorpe

*Lead Pastor
(Staff)*



John Butcher

*Mansfield
(Non-staff)*



Tim Bailie

*Ilkeston
(Non-staff)*



Nathan Butcher

*Mansfield
(Non-staff)*



Andi Richardson

*Mansfield/Belper
(Non-staff)*



Neil Simpson

*Ilkeston
(Non-staff)*



Ann Tompkinson

*Ilkeston
(Non-staff)*

The last part of our Leadership foundation is found in external Ministries and Ministers:-

STRENGTHENED BY APOSTLES

The Senior Leadership, Campus Pastors and Board of Trustee teams of Arena Church recognise the need for proven Apostolic gift input into the church. These relationships add weight, security, wisdom and strength to Arena Church as a whole.

WE ARE ONE CHURCH IN SIX LOCATIONS WITH 600 PEOPLE ACROSS ALL LOCATIONS.

Our gatherings are a place to:-

Encounter God, inspire the found and reach the lost!

We also have dozens of different groups that are led by great leaders that are spread across the locations.

MOVING FORWARD PARTNERSHIP

Arena also has a wider influence as we spearhead a small partnership of churches, approx 11 churches, that are spread from Scotland to London. This is called the Moving Forward Partnership. Many of the churches are newly planted or have been repurposed. We are in a relationship with the Pastors as friends and these gatherings give us the opportunity to learn and grow together. We gather live 4 times a year as leaders.

ARENA COMMUNITY

We own/lease 15 buildings and our church buildings:-

Are a place where we can gather.

Are a place to serve the community;

Provide a small income for ministry costs through room hire and conferencing;

Over the past 10 years Arena Community has been actively serving the community through many impactful local initiatives that benefit 1000's each month. It is the community arm of Arena Church, and it continues to make a difference for scores of people through the work of an army of volunteers and a small team of staff.

We practically serve and assist the most vulnerable and hurting across the M1 from J25 -28, which also includes helping some with life controlling issues. This may be the lone parent doing their best to raise children, while also serving children who are hungry and vulnerable. It also means we do much work amongst those who are elderly and lonely.

ARENA COMMUNITY: KEY MEMBERS

Lisa Harrison, the Community Pastor, oversees a team of staff.



Lisa Harrison
*Community Pastor/
Director*



Louise Richardson
*Community Coordinator
Mansfield*



Olivia Richardson
*Operations Supervisor
The Ilkeston Hub*



Mel Wollins
Senior Team

Ann Simpson
Retail Manager

WHY WE RUN BUSINESSES

It costs over £400,000 to operate this charity each year, and Arena Community has only secured small grants over the years compared to the scale of the operation. In reality, the charity is only able to function through the goodwill of many local people, generous church donations from Arena Church that runs into £1000s each month, and the donations of many generous businesses, business people and individuals.

THE 1000 CLUB & BUSINESS BUDDIES

We run businesses such as Arena Hope, Open Door and The Project as an endeavour to generate our own income, so that we do not become solely dependent upon grants and government support. Through the running of charity shops, charity coffee shops, the repairing and renewing of furniture (which is then sold through our shops and online) we are able to create employment for people in the town and any profit is put straight back into Arena Community. This enables the charity to provide many services across the M1 corridor that we serve.

OUR WORK OVER THE LAST 10 YEARS:

- Foodbank parcels for both the individual and family. This provides basic food and toiletries for 1000s of local families each year. We have given away ten of thousands of parcels over the years.
- Care for a Coffee that operates twice a week. We serve over 100 people each week who are lonely, homeless, and many of them, vulnerable.
- We give away homeless packs including food, clothing, sleeping bags.
- We run a service that gives away a free meal, and social events for some that could not afford to attend anything with a price attached.
- A hot shower that provides washing facilities for the homeless. Washing and Drying machines.
- We have established, through the rental of houses, a base for 10 people who otherwise would be homeless or sofa surfing.
- Baby equipment and school uniforms.
- Clothing giveaway.
- Furniture and white goods giveaway.
- After school kids club partnering with 2 schools. It provides a 2-hour safe place for them to have a hot meal, play and learn, including a homework corner.
- Half Term food packs.
- We organised a Summer holiday residential for 20 kids who have never been on holiday.
- Establishing a central hub with a staff team that oversees 80 volunteers.
- We partner with over 60 organisations in both Ilkeston and Mansfield.
- Food hampers and parcels at Christmas for 100's of families.
- Quality Christmas gifts for children without presents as identified by the schools and social services.
- Easter eggs for multiple schools.
- "Serve Day" where we mobilise over 300 people who serve our towns practically through food giveaways, children's fun activities, street clean ups and serving our local care homes by renovating their gardens.

ARENA COMMUNITY BOARD OF TRUSTEES

Formed as a charity in 2006, Arena Community is a subsidiary of Arena Church, but operated by a different board of trustees.

PHIL PYE (CHAIRMAN)

ANN SIMPSON

LISA HARRISON (COMMUNITY PASTOR)

BOB TYE

ANGELA BUTCHER

There is a relational connection between Church and Community, helped by the Lead Pastor and Senior Leadership Team working with Lisa, her team and the board.

ARENA WORLD PARTNERSHIPS

**FINALLY, OUR WORD AND WORKS ARE NOT
JUST EXPRESSED LOCALLY, BUT ALSO
GLOBALLY.**

ALBANIA

GREECE (THESSALONIKI)

INDIA

KENYA

NAMIBIA

ROMANIA

SLOVAKIA

TOULOUSE, FRANCE

**AS WELL AS THROUGH CONNECTIONS
WITH OPEN DOORS UK**



A R E N A C H U R C H

W: www.arenachurch.co.uk T: 0115 944 2996

E: admin@arenachurch.co.uk

Arena Church is an AOG Church and registered charity No. 1052643